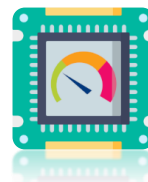


Encode Labs PRTG Server Integration for C•CURE 9000

Powerful infrastructure monitoring

Paessler PRTG Network Monitor enables you to monitor your infrastructure (servers, network components, overall system health) using several protocols such as SNMP, ICMP, WMI, OPC, etc. The PRTG Server integration from Encode Labs acts as an endpoint to receive HTTP Notifications coming from the PRTG Server. This combination provides you with critical security infrastructure monitoring directly inside the C•CURE 9000 event management system.



Ensure continuity

Leverages the existing C•CURE 9000 security and event monitoring capabilities and enriches it further to manage possible issues from within the complete security infrastructure. Such as network segments that might be down, server components that might be at risk of malfunctioning, power issues, etc.

Simplified view

With the integration deployed, you have a simplified view on the infrastructure health through your C•CURE9000 installation. One client software for the end user.

Some sample use cases

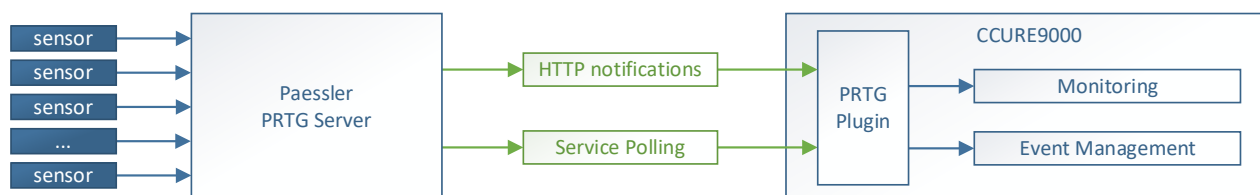
- Monitor health of critical security servers: monitor running services, network availability, component health, etc.
- Ensure you don't run out of disk space on any security server, logging or backup servers, and keep an eye on SQL Database sizes
- Provide key metrics such as accumulated up/down-time, last message, status.
- Manage certificate validity across devices by receiving warnings before expiration, avoiding downtime.

| Name | Description | Accumulated Up-Time | Enabled | Paessler Sensor Status |
|---|--------------|---------------------|-------------------------------------|------------------------|
| Active Processes (SNMP Custom) | NAS1 | 100.0000% [167 d] | <input checked="" type="checkbox"/> | Up |
| SSL Certificate Sensor (Port 443) (SSL Certificate) | NAS1 | 100.0000% [167 d] | <input checked="" type="checkbox"/> | Warning |
| Physical Disk: Disk 1 (SNMP Synology Physical Disk) | NAS1 | 100.0000% [167 d] | <input checked="" type="checkbox"/> | Up |
| SSL Security Check (Port 443) (SSL Security Check) | NAS1 | 100.0000% [167 d] | <input checked="" type="checkbox"/> | Up |
| Physical Disk: Disk 2 (SNMP Synology Physical Disk) | NAS1 | 100.0000% [167 d] | <input checked="" type="checkbox"/> | Up |
| Memory: Physical memory (SNMP Memory) | NAS1 | 100.0000% [167 d] | <input checked="" type="checkbox"/> | Up |
| Synology System Health (SNMP Synology System Health) | NAS1 | 100.0000% [167 d] | <input checked="" type="checkbox"/> | Up |
| Logical Disk: Volume 1 (SNMP Synology Logical Disk) | NAS1 | 100.0000% [167 d] | <input checked="" type="checkbox"/> | Up |
| (003) eth0 Traffic (SNMP Traffic) | NAS1 | 100.0000% [167 d] | <input checked="" type="checkbox"/> | Up |
| Ping (Ping) | Helix Server | 100.0000% [237 d] | <input checked="" type="checkbox"/> | Up |
| Intel[R] Ethernet Connection [7] I219-LM (Windows Network Card) | Probe Device | 100.0000% [237 d] | <input checked="" type="checkbox"/> | Up |

Key Features

- Leverage the powerful monitoring capabilities from the PRTG Server
- Provide key metrics for sensors
- Freely configure notification settings and trigger conditions on the PRTG Server
- Easy synchronization: automatically creates received sensor objects inside the C•CURE
- WatchDog functionality to monitor inter-server comms between C•CURE and PRTG Server
- Implement PRTG sensors in C•CURE Maps and follow their status updates
- Generate triggers in the C•CURE on sensor status changes

Diagram



Supported OS

Windows Server 2022 Standard & Enterprise (64-bit, minimum version 21H2)

Windows Server 2019 Standard & Enterprise (64-bit)

Windows Server 2016 Standard & Enterprise (64-bit, SP1 or higher)

Windows 11 Professional & Enterprise (minimum version 21H2)

Windows 10 Professional & Enterprise (64-bit, version 1809 or higher)

Supported Versions

C-CURE 9000 V2.70 to V3.00

Ordering information

| Model Number | Description |
|--------------|---|
| CC9-SNMP-SM | CCURE 9000 SNMP Monitoring adapter for a Small C-CURE 9000 system (series L, M, N) |
| CC9-SNMP-MED | CCURE 9000 SNMP Monitoring adapter for a Medium C-CURE 9000 system (series P, Q, R and for MAS 1, 2, 3) |
| CC9-SNMP-LG | CCURE 9000 SNMP Monitoring adapter for a Large C-CURE 9000 system (series R+,S, S+,T and for MAS 4, 5, 6) |
| CC9-SNMP-S | CCURE 9000 SNMP Monitoring adapter SSA (mandatory) |

*This solution does NOT include any Paessler licenses. You can use the free version of Paessler PRTG Network Monitor for monitoring up to 100 sensors, or purchase a license from Paessler if more sensors are required. Refer to the Paessler website for more information.

Download

For more information on this module please follow this link <https://www.encode labs.be/>

The Software Package is available from our download page, the installation package contains all software and documentation: <https://www.encode labs.be/support/software-download-page/>